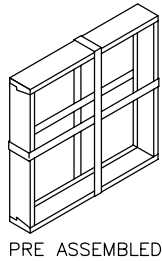
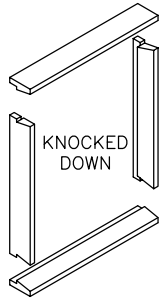


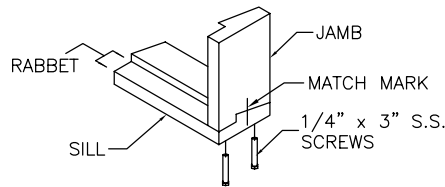
Style 1, 2, 4, 5, 6 & 11 Wall Window By Chem-Pruf® for Existing Openings



1. Set box containing window frame at indicated tag location. Be sure box tag agrees with location, as all windows are made to order. Remove parts from crates and check for damage. Notify Chem-Pruf® at 1-800-444-6924 if parts are missing.

2. Check window size on packing list. Opening should allow 1/4" to 3/8" clearance all around. If dimensions are not correct, do not modify or cut Chem-Pruf® frame. The frame was built to dimensions given on approved shop drawings by buyer. Be sure frame you are checking belongs to this opening. Notify Chem-Pruf® of any discrepancies.

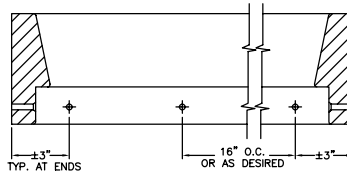
3. **Note:** If frame is shipped knocked down fasten frame together with supplied 1/4"x3" stainless steel screws.
CAUTION: Just bring up snug. Do not over torque. Be sure match marks agree.



NOTE:
ILLUSTRATION DOES NOT NECESSARILY SHOW FRAME YOU RECEIVED.
STYLE V FRAME SHOWN HERE.

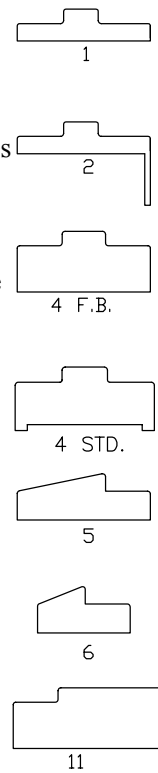
4. Set frame in opening. Notched parts are jambs (side pieces).

5. Set shims to hold frame in correct position on wall. See Plans. Center frame in opening. Drill 1/4" diameter hole through frame rabbet and countersink 82 degrees. Drill appropriate diameter hole into structure.



STYLE V FRAME SHOWN

- a. **CMU/Concrete - Recommended Method(1/4" Crete-Flex) Rabbet Anchors** - Field drill 1/4" hole in both jamb rabbets and header. Drill 2" into solid structure with a 15/64 masonry bit, only. Set anchors about 3" from end of each leg. Countersink 82 degrees so head of fastener will set flush in rabbet. Set anchors 24" on center (o.c.) or as desired.
- b. **Metal/Wood Studs - (#14 Sheet Metal Screws)**



O.K. TO RELEASE MANAGEMENT: _____ DATE: _____
 PRODUCTION: _____ DATE: _____
 COST CONTROL: _____ DATE: _____

NO PART OF THIS DRAWING MAY BE REPRODUCED, STORED IN A RETRIEVAL SYSTEM, OR TRANSMITTED IN ANY FORM OR BY ANY MEANS, ELECTRONIC, MECHANICAL, PHOTOCOPYING, RECORDING OR OTHERWISE, WITHOUT THE PRIOR WRITTEN CONSENT OF CHEM-PRUF® DOOR CO., LTD.

THE DATA CONTAINED IN THIS PUBLICATION IS FOR THE CONFIDENTIAL USE OF THE PURCHASER ONLY. THIS DATA IS NOT TO BE SOLD OR OTHERWISE PROVIDED TO THIRD PARTIES IN ANY FORM.

© COPYRIGHT CHEM-PRUF® DOOR CO., LTD. 2005
 U.S. PATENT #'S 4374693, 4429498, 5072561



P.O. BOX 4560 BROWNSVILLE, TX 78523
 1-800-444-6924 / FAX: (956) 544-7943
 www.chem-pruf.com

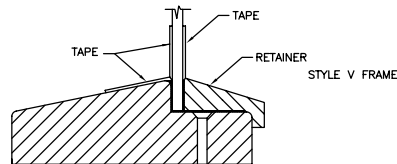
STYLE 1, 2, 4, 5, 6 & 11 WALL WINDOW
 BY CHEM-PRUF® FOR EXISTING OPENINGS

DWG. NO: 14-7		INSTALLATION INSTRUCTIONS		PAGE: 1 OF 2	
SCALE	DWN BY	REV. #	DATE		
N.T.S.	JA	07	10/29/05		

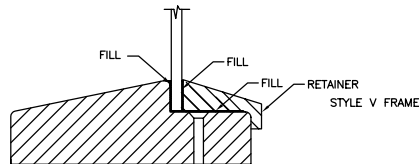
c. *Steel - (1/4"-20 Machine Screws)*

Same as above except drill and tap steel structure 1/4-20 to accept supplied screws.

6. Set shim behind each fastener and snug up plumb and level.
DO NOT OVER TORQUE
7. Set glazing. Check that glazing fits with about 1/16" clearance around.
8. Remove backing from supplied glazing tape that is applied to stop. Install glazing. Press firmly to adhere glazing to frame.
9. Check supplied retainers for fit. After retainers fit properly, remove backing tape from glazing tape and install retainers. Press firmly in place.
10. Mask off frame and glazing per drawing.



11. Seal with appropriate sealants. Be sure sealant completely fills area around retainer and stop.



12. After sealant cures, trim as desired and remove masking tape.

O.K. TO RELEASE MANAGEMENT: _____ DATE: _____
 PRODUCTION: _____ DATE: _____
 COST CONTROL: _____ DATE: _____

NO PART OF THIS DRAWING MAY BE REPRODUCED, STORED IN A RETRIEVAL SYSTEM, OR TRANSMITTED IN ANY FORM OR BY ANY MEANS, ELECTRONIC, MECHANICAL, PHOTOCOPYING, RECORDING OR OTHERWISE, WITHOUT THE PRIOR WRITTEN CONSENT OF CHEM-PRUF® DOOR CO., LTD.

THE DATA CONTAINED IN THIS PUBLICATION IS FOR THE CONFIDENTIAL USE OF THE PURCHASER ONLY. THIS DATA IS NOT TO BE SOLD OR OTHERWISE PROVIDED TO THIRD PARTIES IN ANY FORM.

© COPYRIGHT CHEM-PRUF® DOOR CO., LTD. 2005
 U.S. PATENT #'S 4374693, 4429498, 5072561



P.O. BOX 4560 BROWNSVILLE, TX 78523
 1-800-444-6924 / FAX: (956) 544-7943
 www.chem-pruf.com

STYLE 1, 2, 4, 5, 6 & 11 WALL WINDOW
 BY CHEM-PRUF® FOR EXISTING OPENINGS

DWG. NO: 14-7		INSTALLATION INSTRUCTIONS		PAGE: 2 OF 2	
SCALE	DWN BY	REV. #	DATE		
N.T.S.	JA	07	10/29/05		