



# CP2 FIRE RATED DOUBLE DOOR QUOTE FORM

HARDWARE INSTALLED  
MAX SIZE 8' X 8'

PHONE: 1-800-444-6924 - FAX: (956) 544-7943 - E-MAIL: INFO@CHEM-PRUF.COM **QUOTE BY:** \_\_\_\_\_

Date: \_\_\_\_\_ Company: \_\_\_\_\_ Contact: \_\_\_\_\_  
 Telephone No.: \_\_\_\_\_ Fax No.: \_\_\_\_\_ **PROJECT/OWNER:** \_\_\_\_\_  
 E-mail: \_\_\_\_\_ Shipping Address: \_\_\_\_\_  
 Billing Address: \_\_\_\_\_  
 \_\_\_\_\_  
 \_\_\_\_\_

## CUSTOMER NOTES:

DOOR LOCATION \_\_\_\_\_

DOOR NO. \_\_\_\_\_  INTERIOR  EXTERIOR

### DOOR SIZE

NOTE: All DOORS AND FRAMES ARE 90 MIN. RATED SUBJECT TO LITE SIZE

DOUBLE DOOR \_\_\_\_\_ W x \_\_\_\_\_ H  WALL OPENING \_\_\_\_\_ W x \_\_\_\_\_ H

### COLOR STD. COLORS

- FDA WHITE  LIGHT GREY  
 CAMEL TAN  DARK BROWN

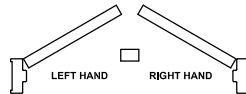
C.P. OPTION COLOR No. \_\_\_\_\_  
(SEE COLOR CHART)

CUSTOM COLOR  
NAME: \_\_\_\_\_

### HAND OF DOOR

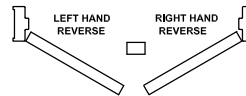
DOUBLE DOOR

#### INSIDE



- LEFT DOOR  ACTIVE  PASSIVE  
 RIGHT DOOR  ACTIVE  PASSIVE

- LEFT DOOR  ACTIVE  PASSIVE  
 RIGHT DOOR  ACTIVE  PASSIVE



KEY SIDE / OUTSIDE - YOU ARE HERE

### DOOR FINISH

- STD. FINISH SEMIGLOSS  CUSTOM  
 HIGH GLOSS  OTHER: \_\_\_\_\_

### WALL MATERIAL

- CONCRETE  MASONRY  STEEL  
 WOOD  OTHER: \_\_\_\_\_  
 METAL STUD

WALL THICKNESS: \_\_\_\_\_



DOOR TO MEET (I.B.C.) CODE UL 10C

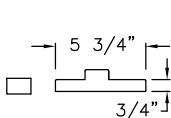
POSITIVE PRESSURE

DOOR TO MEET (I.B.C.) CODE UL 10B

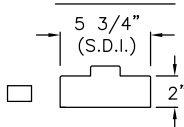
NEGATIVE PRESSURE

### FRAME: FIBERGLASS FIRE RATED UL 10B STYLES AS BELOW

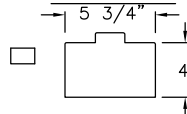
#### STYLE 1



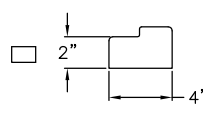
#### STYLE 4



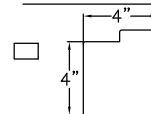
#### OPTIONAL 4" HEADER



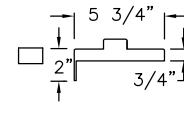
#### STYLE 4.4



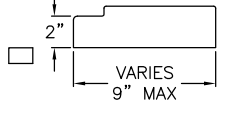
#### OPTIONAL 4.4 - 4" HEADER



#### STYLE 2



#### STYLE 11



PHONE: 1-800-444-6924 / FAX: (956) 544-7943

WEB SITE: WWW.CHEM-PRUF.COM

E-MAIL: INFO@CHEM-PRUF.COM

ORDER FORM SHEET 1 OF 2

ORDER SHEET CP2 REVISION 2 6/20/14



- HARDWARE INSTALLED
- MAX SIZE 8' X 8'

PHONE: 1-800-444-6924 - FAX: (956) 544-7943 - E-MAIL: INFO@CHEM-PRUF.COM **QUOTE BY:** \_\_\_\_\_

**WINDOWS**

- SIZE = 100 SQ. INCHES = 90 MIN LABELED
- SIZE = 100 SQ. INCHES = 60 MIN LABELED
- SIZE = 1296 SQ. INCHES = 45 MIN LABELED
- SIZE = 1296 SQ. INCHES = 20 MIN LABELED

**STANDARD ENTRY DEVICES (RATED)**

**LOCKSET, - ENTRANCE**

- CYLINDRICAL       KNOB
- MORTISE             LEVER

**PASSAGE SET, S.S.**

- CYLINDRICAL       KNOB
- MORTISE             LEVER

**EXIT DEVICE, S.S.**

- SURFACE MOUNT     KNOB
- MORTISE             LEVER TRIM
- VERTICAL ROD       NON-LOCKING
- PULL W/THUMB LATCH

KEY INSTRUCTIONS: \_\_\_\_\_  
\_\_\_\_\_

**PREP OPTIONS:**

- CYLINDRICAL BORE     OTHER \_\_\_\_\_
- MORTISE POCKET      \_\_\_\_\_
- WITH CERAMIC VEIL      \_\_\_\_\_

**STANDARD THRESHOLDS**

- ALUMINUM
- PANIC TYPE - 1/2" ALUMINUM \_\_\_\_\_

**STANDARD WEATHERSTRIP**

- ALUMINUM HOUSING, BULB TYPE
- ADHESIVE TYPE WHITE

**STANDARD DOOR BOTTOMS**

**DOOR SWEEP**

- STAINLESS STEEL       ALUMINUM

**STANDARD ASTRAGAL (DOUBLE DOOR ONLY)**

- STAINLESS FMEA EDGE GUARD ASTRAGAL = UL 10B
- STAINLESS FMA EDGE GUARD ASTRAGAL = UL 10C

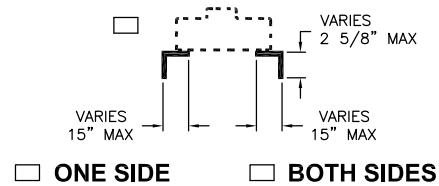
REQUIRED TO BE INSTALLED BY CHEM-PRUF

**STANDARD KICKPLATES**

**KICKPLATE, 304 S.S., .050**

- PUSH SIDE ONLY       BOTH SIDES
- 8"       10"
- OPTIONAL: HEIGHT \_\_\_\_\_
- (HEIGHT MUST BE LESS THAN 16 INCHES)**

**OPTION FRP TRIM**



**OTHER HARDWARE DESCRIBE:**

PHONE: 1-800-444-6924 / FAX: (956) 544-7943

WEB SITE: WWW.CHEM-PRUF.COM  
E-MAIL: INFO@CHEM-PRUF.COM

ORDER FORM SHEET 2 OF 2  
ORDER SHEET **CP2** REVISION **2** 6/20/14